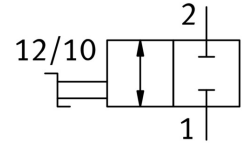
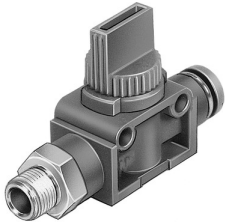


On off valve HE-2-1/8-QS-6

Part number: 153471

FESTO



Data sheet

Feature	Value
Type code	HE
Valve function	2/2 bistable
Pneumatic connection 1	R1/8
Pneumatic connection 2	QS-6
Actuation type	Manual
Type of mounting	Optionally: Direct mounting via through-hole Direct fastening via thread
Standard nominal flow rate	279.9 l/min
Nominal width	3.2 mm
Operating pressure	-0.095 MPa ... 1 MPa
Operating pressure	-0.95 bar ... 10 bar
Ambient temperature	0 °C ... 60 °C
Housing material	PBT-reinforced
Operating medium	Compressed air as per ISO 8573-1:2010 [7:-:-]
Sealing principle	Soft
Mounting position	Any
Structural design	Piston gate valve
Type of control	Direct
Flow direction	Non-reversible
Symbol	00997328
Information on operating and pilot media	Operation with oil lubrication possible (required for further use)
Corrosion resistance class (CRC)	2 - Moderate corrosion stress
Temperature of medium	0 °C ... 60 °C
Product weight	29 g
Material of screwed trunnion	Brass, nickel-plated
Note on materials	RoHS-compliant
Seals material	NBR